

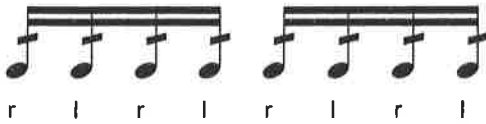


OMEA Rudiment Requirements

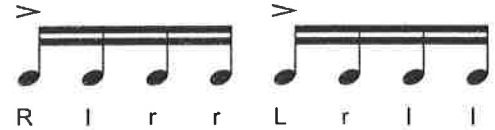
(Revised 2019)

HS Class C

1 Double Stroke Open Roll



2 Single Paradiddle



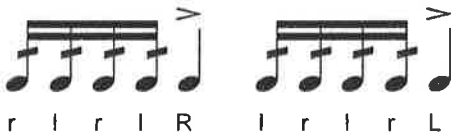
3 Flam



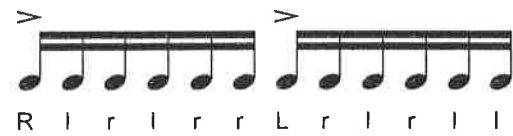
4 Drag



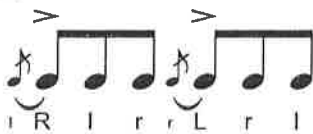
5 Nine Stroke Roll



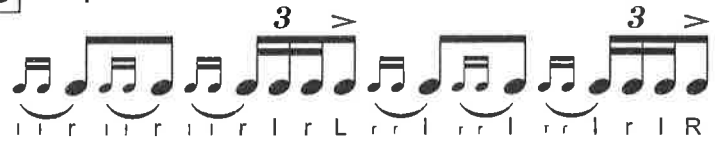
6 Double Paradiddle



7 Flam Accent



8 Triple Ratamacue



Performance Requirements

1. Rudiments are to be performed from memory.
2. Class C soloists will be asked 3 rudiments from the 8 rudiments shown above.
3. Open-Close-Open (OCO) or Slow-Fast-Slow performance is intended to demonstrate the student's control of each rudiment throughout a wide tempo range. A student should perform each rudiment in OCO style with significant tempo change and minimal dynamic variation. The rudiment should remain clear and accurate throughout, maintaining consistent note spacing and rhythm, as well as clarity of accents, grace notes, and double strokes. Performance length should fall between 15-30 seconds.



OMEA Rudiment Guide - Class C (2019)

1 Double Stroke Open Roll

Musical notation for Double Stroke Open Roll, showing four measures of music with dynamics: accel. to and decel. to.

Measure 1: Quarter notes (r, r, l, l) with dynamics 'r' and 'l' below.

Measure 2: Eighth notes (r, r, l, l) with dynamics 'r' and 'l' below. Dynamics: accel. to.

Measure 3: Sixteenth notes (r, r, l, l) with dynamics 'r' and 'l' below. Dynamics: accel. to.

Measure 4: Thirty-second notes (r, l, r, l) with dynamics 'r' and 'l' below. Dynamics: accel. to.

Measure 5: Sixteenth notes (r, r, l, l) with dynamics 'r' and 'l' below. Dynamics: decel. to.

Measure 6: Eighth notes (r, r, l, l) with dynamics 'r' and 'l' below. Dynamics: decel. to.

Measure 7: Quarter notes (r, r, l, l) with dynamics 'r' and 'l' below. Dynamics: decel. to.

2 Single Paradiddle

Musical notation for Single Paradiddle, showing four measures of music with dynamics: accel. to and decel. to.

Measure 1: Quarter notes (R, l, r, r, L, r, l, l) with dynamics 'R', 'l', 'r', 'r', 'L', 'r', 'l', 'l' below.

Measure 2: Eighth notes (R, l, r, r, L, r, l, l) with dynamics 'R', 'l', 'r', 'r', 'L', 'r', 'l', 'l' below. Dynamics: accel. to.

Measure 3: Sixteenth notes (R, l, r, r, L, r, l, l) with dynamics 'R', 'l', 'r', 'r', 'L', 'r', 'l', 'l' below. Dynamics: accel. to.

Measure 4: Thirty-second notes (R, l, r, r, L, r, l, l) with dynamics 'R', 'l', 'r', 'r', 'L', 'r', 'l', 'l' below. Dynamics: accel. to.

Measure 5: Sixteenth notes (R, l, r, r, L, r, l, l) with dynamics 'R', 'l', 'r', 'r', 'L', 'r', 'l', 'l' below. Dynamics: decel. to.

Measure 6: Eighth notes (R, l, r, r, L, r, l, l) with dynamics 'R', 'l', 'r', 'r', 'L', 'r', 'l', 'l' below. Dynamics: decel. to.

Measure 7: Quarter notes (R, l, r, r, L, r, l, l) with dynamics 'R', 'l', 'r', 'r', 'L', 'r', 'l', 'l' below. Dynamics: decel. to.

3 Flam

Musical notation for Flam, showing four measures of music with dynamics: accel. to and decel. to.

Measure 1: Quarter notes (l R, r L, l R, r L) with dynamics 'l', 'R', 'r', 'L', 'l', 'R', 'r', 'L' below.

Measure 2: Eighth notes (l R, r L, l R, r L) with dynamics 'l', 'R', 'r', 'L', 'l', 'R', 'r', 'L' below. Dynamics: accel. to.

Measure 3: Sixteenth notes (l R, r L, l R, r L) with dynamics 'l', 'R', 'r', 'L', 'l', 'R', 'r', 'L' below. Dynamics: accel. to.

Measure 4: Thirty-second notes (l R, r L, l R, r L) with dynamics 'l', 'R', 'r', 'L', 'l', 'R', 'r', 'L' below. Dynamics: accel. to.

Measure 5: Sixteenth notes (l R, r L, l R, r L) with dynamics 'l', 'R', 'r', 'L', 'l', 'R', 'r', 'L' below. Dynamics: decel. to.

Measure 6: Eighth notes (l R, r L, l R, r L) with dynamics 'l', 'R', 'r', 'L', 'l', 'R', 'r', 'L' below. Dynamics: decel. to.

Measure 7: Quarter notes (l R, r L, l R, r L) with dynamics 'l', 'R', 'r', 'L', 'l', 'R', 'r', 'L' below. Dynamics: decel. to.

4 Drag

Musical notation for Drag, showing four measures of music with dynamics: accel. to and decel. to.

Measure 1: Quarter notes (l l, R r, r L, l l, R r, r L) with dynamics 'l', 'l', 'R', 'r', 'r', 'L', 'l', 'l', 'R', 'r', 'r', 'L' below.

Measure 2: Eighth notes (l l, R r, r L, l l, R r, r L) with dynamics 'l', 'l', 'R', 'r', 'r', 'L', 'l', 'l', 'R', 'r', 'r', 'L' below. Dynamics: accel. to.

Measure 3: Sixteenth notes (l l, R r, r L, l l, R r, r L) with dynamics 'l', 'l', 'R', 'r', 'r', 'L', 'l', 'l', 'R', 'r', 'r', 'L' below. Dynamics: accel. to.

Measure 4: Thirty-second notes (l l, R r, r L, l l, R r, r L) with dynamics 'l', 'l', 'R', 'r', 'r', 'L', 'l', 'l', 'R', 'r', 'r', 'L' below. Dynamics: accel. to.

Measure 5: Sixteenth notes (l l, R r, r L, l l, R r, r L) with dynamics 'l', 'l', 'R', 'r', 'r', 'L', 'l', 'l', 'R', 'r', 'r', 'L' below. Dynamics: decel. to.

Measure 6: Eighth notes (l l, R r, r L, l l, R r, r L) with dynamics 'l', 'l', 'R', 'r', 'r', 'L', 'l', 'l', 'R', 'r', 'r', 'L' below. Dynamics: decel. to.

Measure 7: Quarter notes (l l, R r, r L, l l, R r, r L) with dynamics 'l', 'l', 'R', 'r', 'r', 'L', 'l', 'l', 'R', 'r', 'r', 'L' below. Dynamics: decel. to.

5 9 Stroke Roll

6 Double Paradiddle

7 Flam Accent

8 Triple Ratamacue